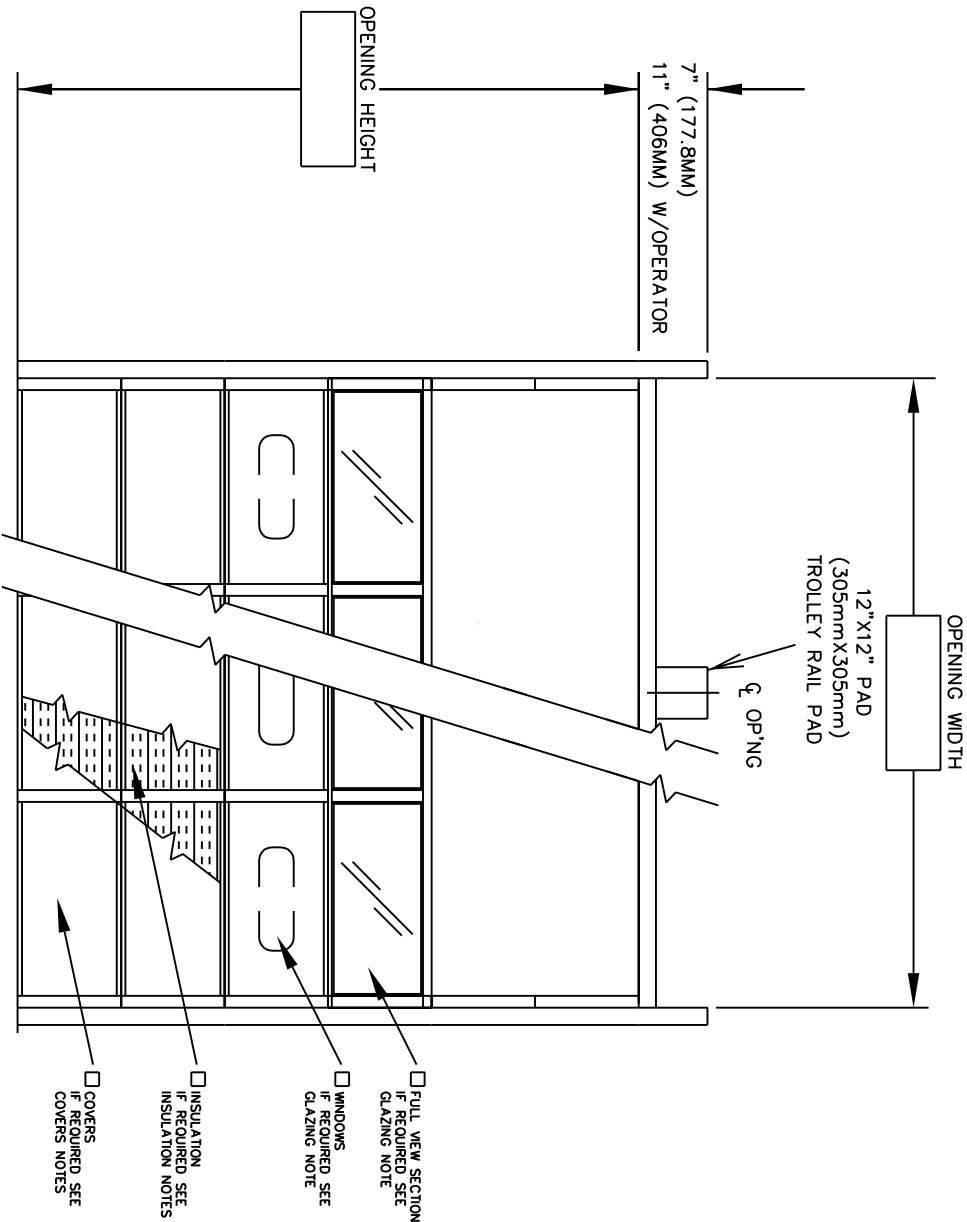


DOOR NUMBER	QTY	OPENING		ACTUAL		MODEL	JAMB	MOUNTING	LOOK	PANELS		SECTION NUMBER OPEN FOR GLASS																												
		WIDTH	HEIGHT	WIDTH	HEIGHT					W	S	M	ANGLE	E	B	R	T	1	2	3	4	5	6	7	8															

STEEL FORM OPTIMA



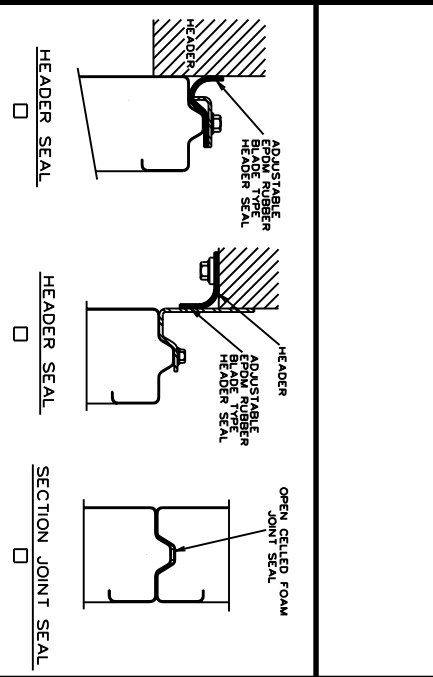
INTERIOR ELEVATION

JOB:	
CONTR:	
ARCH:	
NR: 2902539	

1) DOORS SHALL BE STEEL SECTIONAL OVERHEAD STEELFORM OPTIMA (S-16) (16 GAUGE) AS MANUFACTURED BY RAYNOR GARAGE DOOR CO.. SECTIONS SHALL BE 2" (50.8mm) THICK, ROLLFORMED FROM COMMERCIAL QUALITY HOT-DIPPED GALVANIZED STEEL PER ASTM A-924 AND A-653. SECTIONS TO HAVE A SMOOTH EXTERIOR SURFACE POLYMERIZED TONGUE AND GROOVE JOINT BILLET AND 16 GWS CENTER STILES RIVETED TO EXTERIOR SURFACE WITH STAINLESS STEEL RIVETS AND RESISTANCE WELDED TO INTERIOR RAIL. SECTION PANEL SEALED AT END STILES WITH 1/4" (6.4mm) THICK POLYETHYLENE FOAM.

FINISH- DOOR EXTERIOR TO HAVE FINISH COAT OF BAKED ON POLYESTER WHITE ENAMEL OVER EPOXY PRIMER. INTERIOR TO HAVE BAKED ON GREY POLYESTER ENAMEL. MAY BE FIELD PAINTED TO MATCH STRUCTURE.

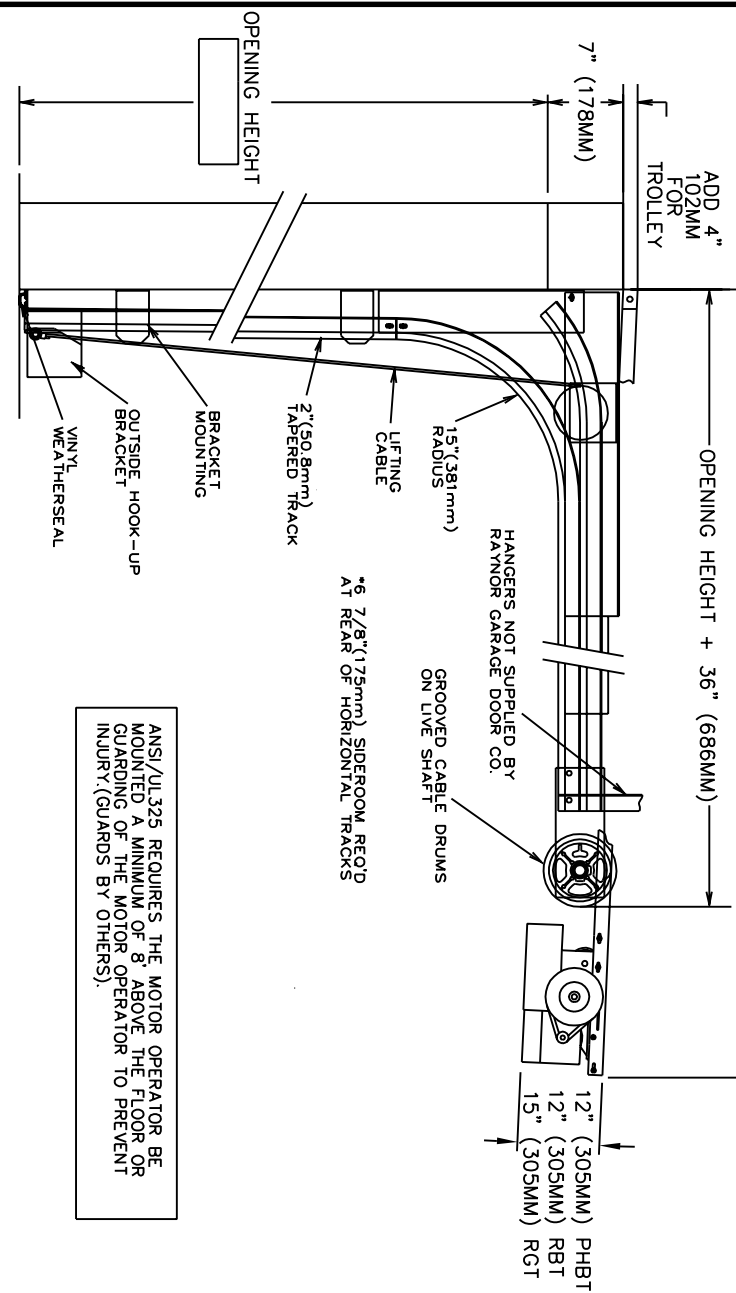
- INSULATION- SECTIONS ARE INSULATED WITH 1 3/8" (34.9mm) THICK RIGID EXPANDED POLYSTYRENE INSULATION, MEETS UL723 (ASTM E-84) WITH A MAXIMUM FLAME SPREAD OF .25. INSULATION FACED WITH 0.015" (0.38mm) WHITE HAIRCELL TEXTURED HIGH-IMPACT POLYSTYRENE. R-VALUE = 7.70 AND U-VALUE = 0.130. (COVERS NOT REQUIRED)
- INSULATION- SECTIONS ARE INSULATED WITH 1 3/4" (44.5mm) THICK RIGID EXPANDED POLYSTYRENE INSULATION, MEETS UL723 (ASTM E-84) WITH A MAXIMUM FLAME SPREAD OF .25. INSULATION FACED WITH 0.015" (0.38mm) WHITE HAIRCELL TEXTURED HIGH-IMPACT POLYSTYRENE. R-VALUE = 7.70 AND U-VALUE = 0.130.
- INSULATION- SECTIONS ARE INSULATED WITH 1 3/4" (44.5mm) THICK RIGID EXPANDED POLYSTYRENE INSULATION, MEETS UL723 (ASTM E-84) WITH A MAXIMUM FLAME SPREAD OF .25. INSULATION FACED WITH 0.015" (0.38mm) WHITE HAIRCELL TEXTURED HIGH-IMPACT POLYSTYRENE. R-VALUE = 7.70 AND U-VALUE = 0.130.
- INSULATION- SECTIONS ARE INSULATED WITH 1 3/4" (44.5mm) THICK RIGID EXPANDED POLYSTYRENE INSULATION, MEETS UL723 (ASTM E-84) WITH A MAXIMUM FLAME SPREAD OF .25. INSULATION FACED WITH 0.015" (0.38mm) WHITE HAIRCELL TEXTURED HIGH-IMPACT POLYSTYRENE. R-VALUE = 7.70 AND U-VALUE = 0.130.
- INSULATION- SECTIONS ARE INSULATED WITH 1 3/4" (44.5mm) THICK RIGID EXPANDED POLYSTYRENE INSULATION, MEETS UL723 (ASTM E-84) WITH A MAXIMUM FLAME SPREAD OF .25. INSULATION FACED WITH 0.015" (0.38mm) WHITE HAIRCELL TEXTURED HIGH-IMPACT POLYSTYRENE. R-VALUE = 7.70 AND U-VALUE = 0.130.
- INSULATION- SECTIONS ARE INSULATED WITH 1 3/4" (44.5mm) THICK RIGID EXPANDED POLYSTYRENE INSULATION, MEETS UL723 (ASTM E-84) WITH A MAXIMUM FLAME SPREAD OF .25. INSULATION FACED WITH 0.015" (0.38mm) WHITE HAIRCELL TEXTURED HIGH-IMPACT POLYSTYRENE. R-VALUE = 7.70 AND U-VALUE = 0.130.
- SECTIONS FURNISHED WITH (24, 20) GAUGE WHITE BAKED ON ENAMEL PAINTED COVERS. FITTING BETWEEN VERTICAL MULLIONS AND HORIZONTAL RAILES ON ALL SECTIONS.
- SECTIONS FURNISHED WITH (26, 24, 20) GAUGE GREY BAKED ON ENAMEL PAINTED COVERS. FITTING BETWEEN VERTICAL MULLIONS AND HORIZONTAL RAILES ON ALL SECTIONS.
- SECTIONS FURNISHED WITH (26, 24, 20) GAUGE GREY BAKED ON ENAMEL PAINTED COVERS. FITTING BETWEEN VERTICAL MULLIONS AND HORIZONTAL RAILES ON ALL SECTIONS.
- GLAZED SECTIONS- SECTIONS SHALL BE RAYNOR SERIES "HL" MADE FROM 6063T6 EXTRUDED ALUMINUM STILE AND RAIL CONSTRUCTION. GLASS ENCASED IN SOFT VINYL CHANNELS AND HELD IN PLACE WITH SNAP-IN EXTRUDED ALUMINUM RETAINER.
- GLAZED SECTIONS- SECTIONS SHALL BE RAYNOR SERIES "HL" MADE FROM 6063T6 EXTRUDED ALUMINUM STILE AND RAIL CONSTRUCTION. GLASS ENCASED IN SOFT VINYL CHANNELS AND HELD IN PLACE WITH SNAP-IN EXTRUDED ALUMINUM RETAINER.
- FULL VIEW SECTIONS TO BE ENDURA COATED TO MATCH DOOR SECTIONS FULL VIEW GLAZING (AS SHOWN) - (DSB OR DSB1)
- GLAZING (AS SHOWN) - 24"(610MM)x8"(203MM)x ---- (1/8", 1/4", 5/8") RUBBER BY RAYNOR.



DOOR NUMBER	QTY	OPENING		ACTUAL		MODEL	JAMB MOUNTING		LOCK	PANELS WIDE		PANELS HIGH		SECTION NUMBER	OPEN FOR GLASS			
		WIDTH	HEIGHT	WIDTH	HEIGHT		W	S		M	A	B	P			K	1	2

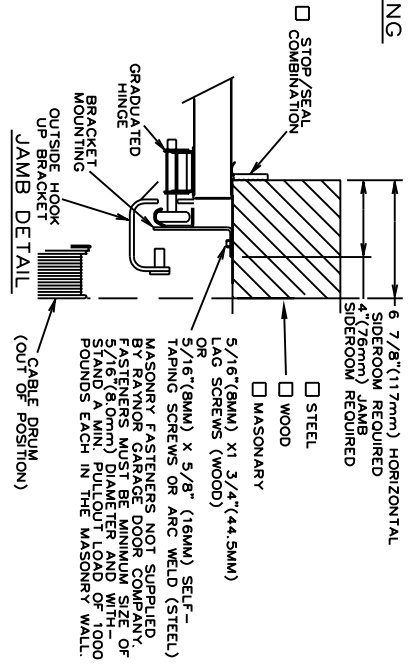
JOB:	
DISTR:	
CONTR:	
ARCH:	NR: 2902539

EVEN NUMBERED DOOR HT. + 3'-10" (1168MM) PHBT
 EVEN NUMBERED DOOR HT. + 4'-6" (1168MM) RBT
 EVEN NUMBERED DOOR HT. + 5'-1" (1168MM) RGT



ANSI/UL325 REQUIRES THE MOTOR OPERATOR BE MOUNTED A MINIMUM OF 8' ABOVE THE FLOOR OR GUARDING OF THE MOTOR OPERATOR TO PREVENT INJURY. (GUARDS BY OTHERS).

SECTION THRU OPENING



- TRACKS - 2" (50.8mm) HOT-DIPPED GALVANIZED TRACK PER ASTM A-653. TRACKS TO BE INSTALLED FOR SEALS TO JAMB HORIZONTAL TRACK TO BE ABSOLUTELY REINFORCED WITH CONTINUOUS ANGLE.
- HARDWARE - HINGES AND BRACKETS MADE FROM GALVANIZED STEEL. TRACK ROLLERS SHALL HAVE TEN 1/4" (6.4mm) DIAMETER HARDENED STEEL BALLS PER ROLLER.
- SPRING COUNTERBALANCE - HEAVY DUTY OIL-TEMPERED WIRE TORSION SPRINGS ON A CONTINUOUS BALL BEARING CROSS-HEADER SHAFT GALVANIZED AIRCRAFT TYPE LIFTING CABLES WITH MIN. SAFETY FACTOR OF 5 TO 1.
- LOCKING - CREMONE TYPE BOLT ENGAGES SLOT IN TRACK, _____ HAND SIDE. FIVE PIN TUMBLER CYLINDER OUTSIDE - NIGHT LATCH INSIDE.
- LOCKING - SPRING LOADED SLIDE BOLT ENGAGES SLOT IN TRACK. OPERABLE FROM INSIDE ONLY - MAY BE MOUNTED EITHER SIDE
- LOCKING - OMIT LOCK.
- LOCKS SHOULD NOT BE SUPPLIED WITH AN ELECTRIC OPERATED DOOR WITHOUT A LOCK INTERLOCK SWITCH.
- RAYNOR POWERHOIST BASIC (PHBT) 1/2 H.P., 115 VOLT, SINGLE PHASE
- RAYNOR POWERHOIST STANDARD (RBT) _____ H.P., _____ VOLT, _____ PHASE
- RAYNOR POWERHOIST OPTIMA (RGT) _____ H.P., _____ VOLT, _____ PHASE
- WIRING TYPE - SR2 WIRING, MOMENTARY CONTACT OPEN/CLOSE/STOP, SAFETY EDGE TO REVERSE.
- WIRING TYPE - SPECIAL (NOT AVAILABLE WITH PHBT OPERATORS)
- SPECIFY SPECIAL WIRING TYPE _____
- PNEUMATIC SAFETY EDGE TO REVERSE COIL CORD
- ELECTRIC SAFETY EDGE TO REVERSE CABLE TAKE UP REEL
- THRU-BEAM PHOTO EYES