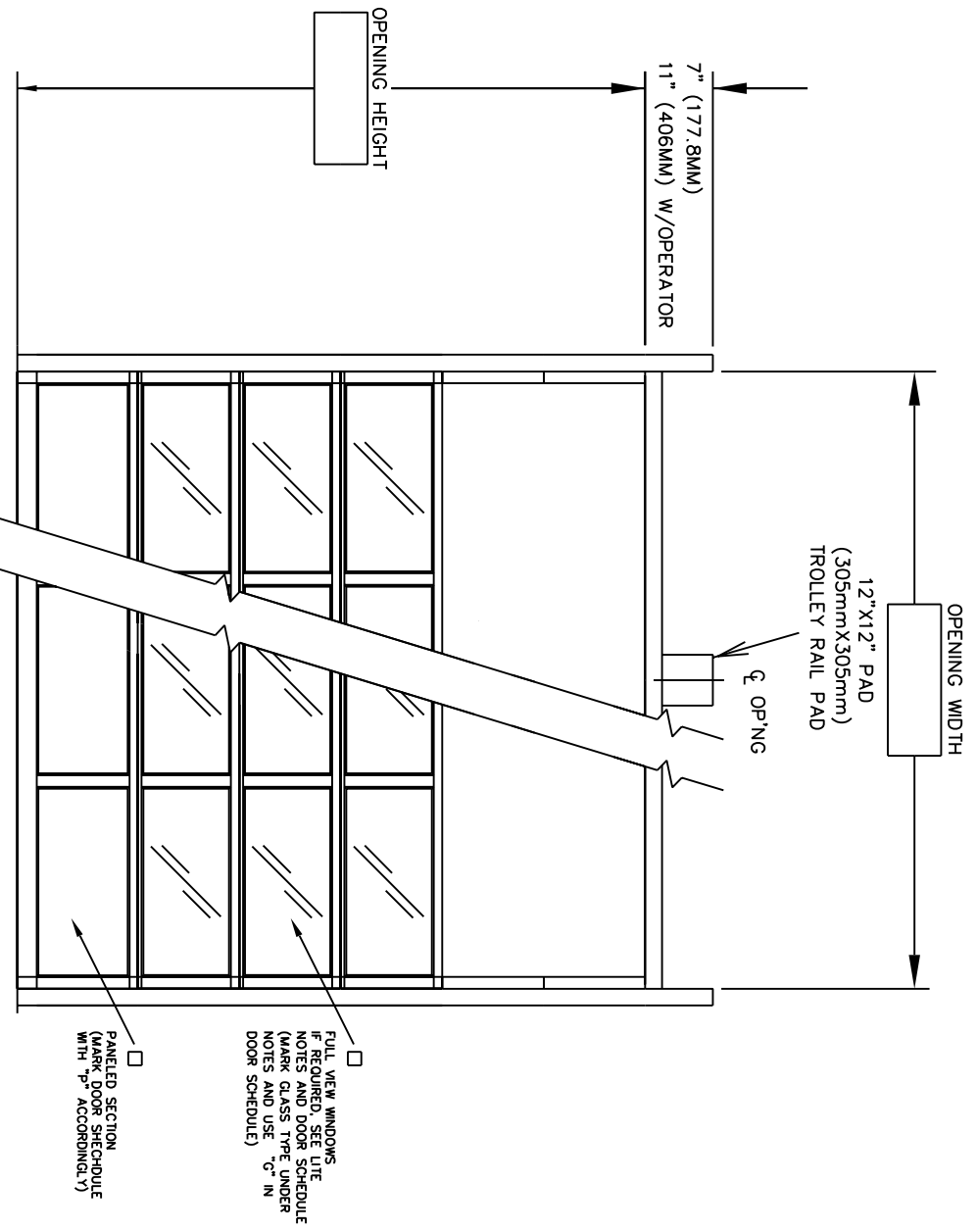


DOOR NUMBER	QTY	OPENING		ACTUAL		MODEL	JAMB			LOOK	PANELS		SECTION NUMBER	OPEN	FOR GLASS																											
		WIDTH	HEIGHT	WIDTH	HEIGHT		W	S	M		ANGLE	BRKT				WIDE	HIGH	1	2	3	4	5	6	7	8																	

JOB:	RAYNOR
DISTR:	
CONTR:	
ARCH:	NR:2902474

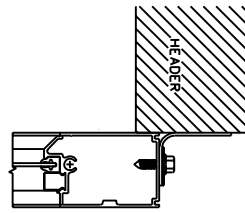
# ALUMAVIEW OPTIMA



- FULL VIEW WINDOWS  
IF REQUIRED, SEE LITE NOTES AND DOOR SCHEDULE (MARK GLASS TYPE UNDER NOTES AND USE "G" IN DOOR SCHEDULE)
- PANELLED SECTION (MARK DOOR SCHEDULE WITH "P" ACCORDINGLY)

1) DOORS SHALL BE RAYNOR SECTIONAL OVERHEAD TYPE ALUMAVIEW OPTIMA "H" AS MANUFACTURED BY RAYNOR GARAGE DOOR CO. SECTIONS SHALL BE 2" (50.8MM) THICK 6063T6 ALUMINUM ALLOY FRAME WITH .050" (1.3mm) THICK ALUMINUM PANELS. STILES AND RAILS TO BE JOINED TOGETHER WITH 5/16" (7.9MM) GALVANIZED THROUGH BOLTS. PANELS AND GLASS TO BE COMPLETELY ENCASED IN EXTRUDED ALUMINUM RETAINERS. BOTTOM RAIL TO BE 5-1/8" (130.2mm) TOP RAILS TO BE 3-1/4" (82.5mm). THE COMBINED DIMENSION OF THE TWO MEETING INTERMEDIATE RAILS TO BE 3-3/4" (95.2mm). ENDSTILES SHALL BE 3-1/4" (82.5mm) OR 6-1/4" (158.7mm) WIDE, DEPENDING ON SIZE. CENTER STILES TO BE 3-5/8" (92.1mm) WIDE. BOTTOM RAIL OF DOOR TO HAVE VINYL WEATHERSTRIP TO SEAL DOOR TO FLOOR. EXTRUSIONS AND PANELS SHOULD BE ETCHED FOR IDENTIFICATION. 2 1/2" (64mm) WIDE IN PAINTED BROWN OR WHITE. SPECIAL ANODIZED FINISHES OR ARMORBRITE COLORS AVAILABLE.

- GLASS (CLEAR)----- (DSB 3/16"(4.8MM) OR DSB 1/4" (6.4MM))
- GLASS (WIRE)----- (DSB 3/16"(4.8MM) OR DSB 1/4" (6.4MM))
- GLASS (TEMPERED)----- (1/8"(3.2MM), 3/16"(4.8MM) OR 1/4" (6.4MM))
- PLEXIGLASS----- (1/8"(3.2MM) OR 1/4" (6.4MM))
- LEXAN----- (1/8"(3.2MM) OR 1/4" (6.4MM))
- LOCKING - CREMONE TYPE BOLT ENGAGES SLOT IN TRACK, ----- HAND SIDE. FIVE PIN TUMBLER CYLINDER OUTSIDE - NIGHT LATCH INSIDE.
- LOCKING - SPRING LOADED SLIDE BOLT ENGAGES SLOT IN TRACK, OPERABLE FROM INSIDE ONLY - MAY BE MOUNTED EITHER SIDE
- LOCKING - OMIT LOCK.
- LOCKS SHOULD NOT BE SUPPLIED WITH AN ELECTRIC OPERATED DOOR WITHOUT A LOCK INTERLOCK SWITCH.



DOOR NUMBER	QTY	OPENING		ACTUAL		MODEL	JAMB	MOUNTING	LOCK	PANELS	PANELS	SECTION NUMBER OPEN FOR GLASS							
		WIDTH	HEIGHT	WIDTH	HEIGHT							W	S	M	ANGLE	PKT	LOCK	WIDE	1


JOB: \_\_\_\_\_

DISTR: \_\_\_\_\_

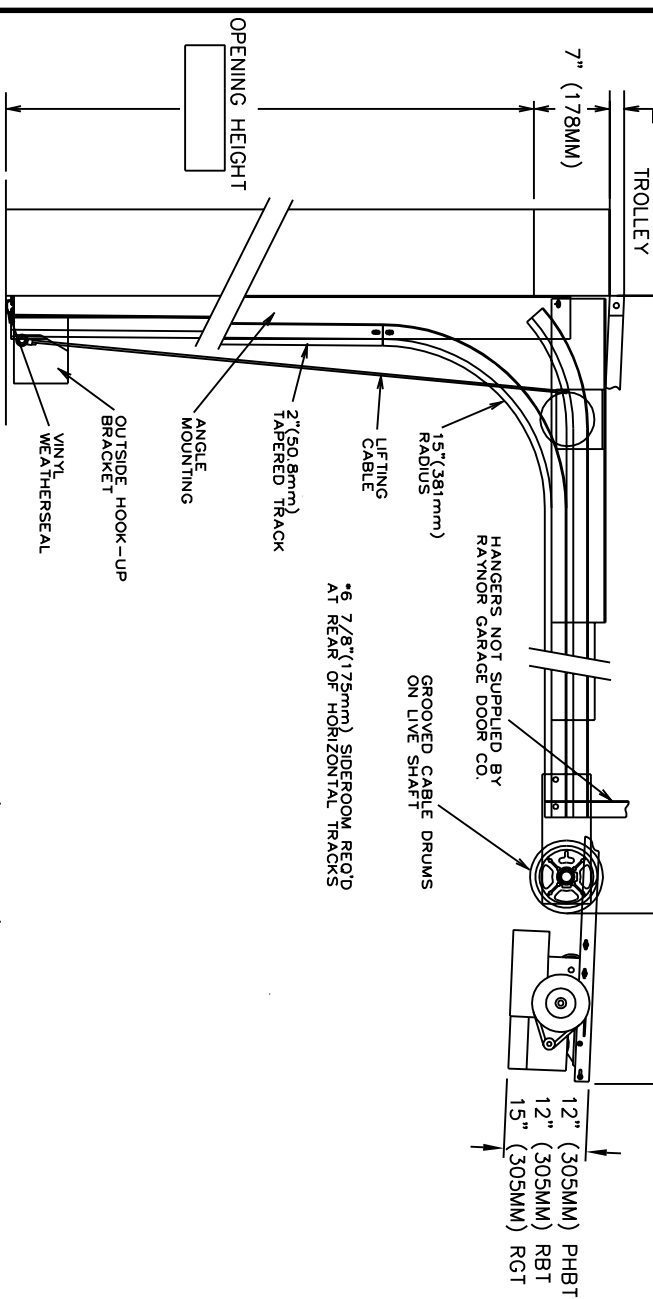
CONTR: \_\_\_\_\_

ARCH: \_\_\_\_\_

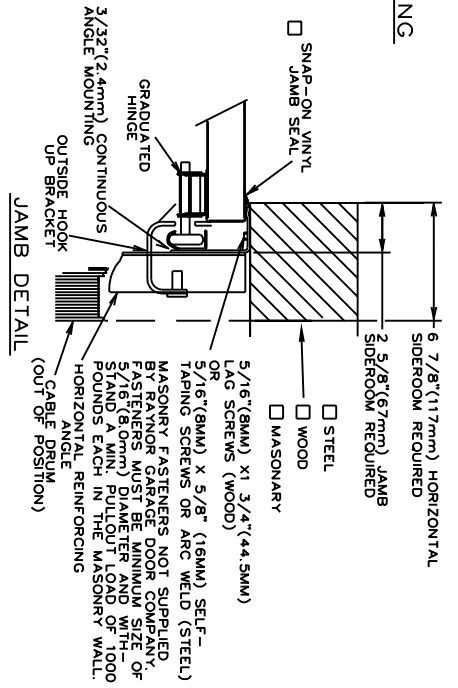
NR: 2902474



EVEN NUMBERED DOOR HT. + 3'-10" (1168MM) PHBT  
 EVEN NUMBERED DOOR HT. + 4'-6" (1168MM) RBT  
 EVEN NUMBERED DOOR HT. + 5'-1" (1168MM) RGT  
 OPENING HEIGHT + 36" (966MM)



SECTION THRU OPENING



JAMB DETAIL

- RAYNOR POWERHOIST BASIC (PHBT) 1/2 H.P., 115 VOLT, SINGLE PHASE
- RAYNOR POWERHOIST STANDARD (RBT) --- H.P., --- VOLT, --- PHASE
- RAYNOR POWERHOIST OPTIMA (RGT) --- H.P., --- VOLT, --- PHASE
- WIRING TYPE-SR2 WIRING, MOMENTARY CONTACT OPEN/CLOSE/STOP, SAFETY EDGE TO REVERSE.
- WIRING TYPE-SPECIAL (NOT AVAILABLE WITH PHBT OPERATORS)
- SPECIFY SPECIAL WIRING TYPE -----
- PNEUMATIC SAFETY EDGE TO REVERSE  COIL CORD
- ELECTRIC SAFETY EDGE TO REVERSE  CABLE TAKE UP REEL
- THRU-BEAM PHOTO EYES

ANSI/UL325 REQUIRES THE MOTOR OPERATOR BE MOUNTED A MINIMUM OF 8' ABOVE THE FLOOR OR GUARDING OF THE MOTOR OPERATOR TO PREVENT INJURY.(GUARDS BY OTHERS).

TRACKS- 2" (50.8mm) HOT-DIPPED GALVANIZED TRACK PER ASTM A-653. TROLLEY TRACKS SHALL BE FULLY ENGAGED WITH TRACKS TO BE ADEQUATELY REINFORCED WITH CONTINUOUS ANGLE.  
 HARDWARE - HINGES AND BRACKETS MADE FROM GALVANIZED STEEL. TRACK ROLLERS SHALL HAVE TEN 1/4" (6.4mm) DIAMETER HARDENED STEEL BALLS PER ROLLER.  
 SPRING COUNTERBALANCE - HEAVY DUTY OIL-TEMPERED WIRE TORSION SPRINGS ON A CONTINUOUS BALL BEARING CROSS-HEADER SHAFT GALVANIZED AIRCRAFT TYPE LIFTING CABLES WITH MIN. SAFETY FACTOR OF 5 TO 1.